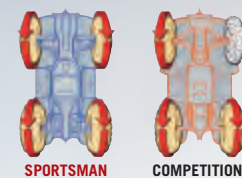


NO BELLS. NO WHISTLES. JUST THE BEST-VALUE,
BEST-SELLING AUTOMATIC
 4X4 ATV EVER.*



SPORTSMAN® 800+500 H.O.



BEST-VALUE ATVs

◀ **ON-DEMAND TRUE ALL-WHEEL DRIVE (AWD)**

The Polaris® exclusive, fastest-responding AWD automatically engages all four wheels when you need more forward traction and reverts back to 2WD when you don't. Other ATVs use limited-slip, engaging only three wheels.

◀ **LEGENDARY SMOOTH INDEPENDENT REAR SUSPENSION (IRS)**

The Sportsman was the world's first ATV with IRS, and it's one of the cornerstones that made the machine as popular as it is today. The rock-solid, proven design with 9.5 inches (24.1 cm) of long-travel IRS minimizes body roll and keeps the ride smooth.

◀ **FRONT STORAGE**

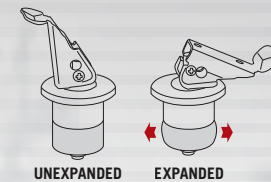
Most integrated storage of any ATV. The large capacity (7.3 gallons/27.6 ltr.) lets you carry loads of gear and still have access to it, even with items tied to the deck.

SPORTSMAN 800 FEATURES

With its towing capacity (1,500 pounds/680.4 kg.) and high ground clearance (11.25 inches/28.6 cm), the Sportsman 800 delivers the kind of performance that riders have come to expect.

◀ **AWARDED BEST IN CLASS**

The Sportsman 800 and 500 H.O. were both awarded Best in Class by *All-Terrain Vehicle* magazine.



ACCESSORIZE IN SECONDS

Turn your Polaris into the world's most versatile ATV with our exclusive Lock & Ride® system. Add or change accessories easily in seconds, creating the ultimate hunting ATV in the morning, a hard worker in the afternoon, and a comfortable trail rider in the evening. And because Lock & Ride accessories are designed for Polaris, you know they'll fit, work, and last.

MORE POLARIS FEATURES

- Sportsman 800 also includes:
- Monster 800 EFI Engine
 - Ten-Gauge Steel Skid Plates
 - 3-Star PXT Tires
 - Front and Rear Lock & Ride



COMPARE THE FACTS	SPORTSMAN 500 H.O.	HONDA FOURTRAX® FOREMAN®* 4X4	YAMAHA GRIZZLY®* 450 AUTO 4X4 IRS	SUZUKI KINGQUAD®* 450 AXI
Engine	498cc ✓	475cc	421cc	454cc
Suspension Travel (front/rear) (in.) [cm]	8.2/9.5 [20.8/24.1] ✓	6.7/6.7 [17/17]	6.3/7.1 [16/18]	7.1/7.9 [18/20]
All-Wheel Drive	On-Demand True AWD ✓	Selectable 2WD/4WD	Push-Button 2WD/4WD/Lock	Selectable 2WD/4WD/Lock

*FourTrax® and Foreman® are registered trademarks of Honda Motor Co., Ltd. Grizzly® is a registered trademark of Yamaha Hatsudoki Kabushiki Kaisha. KingQuad® is a registered trademark of Suzuki Motor Corporation.

SPORTSMAN 800+500 H.O.

SPORTSMAN